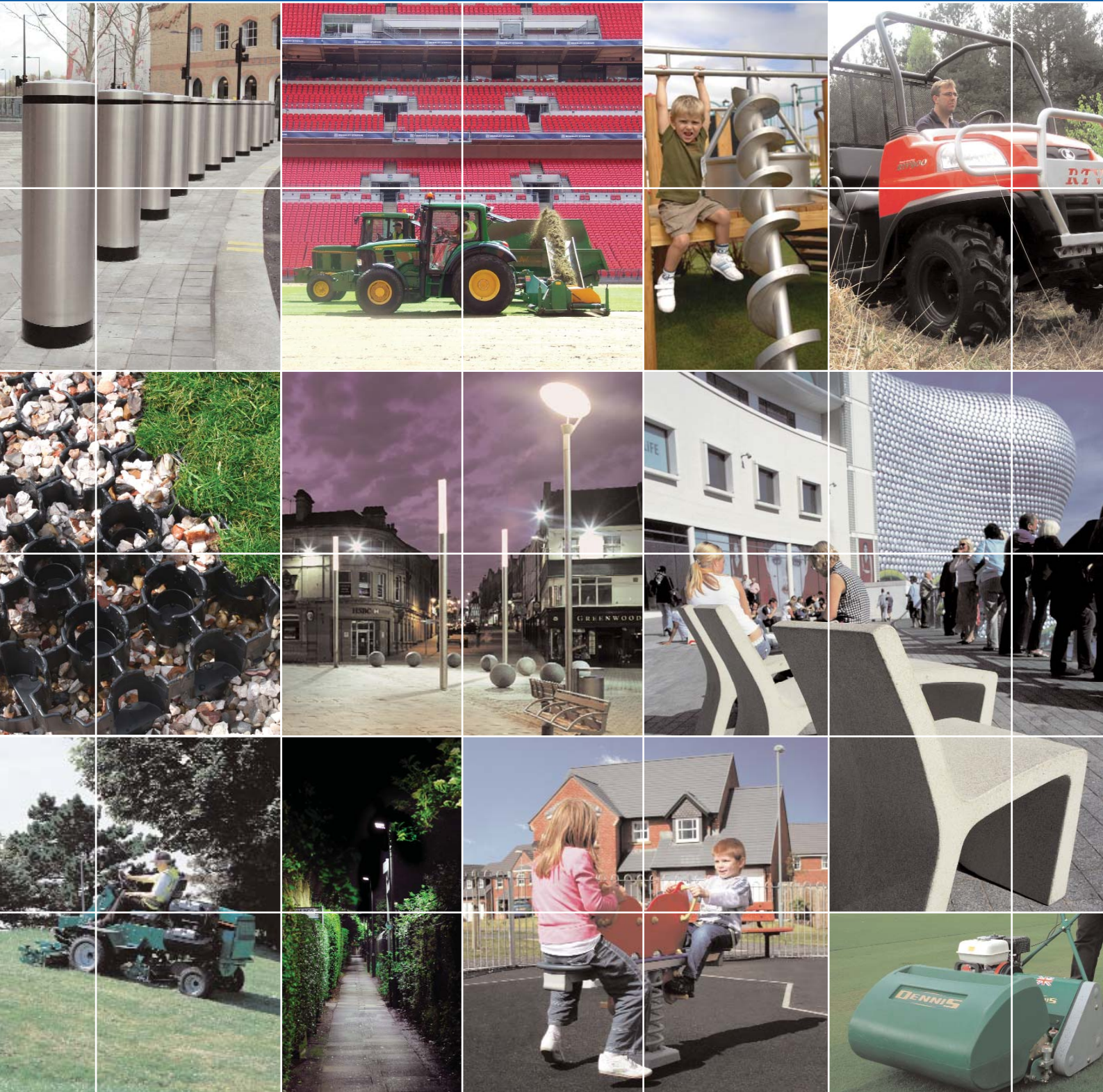


# Landscape & Amenity

PRODUCT UPDATE



## LANDSCAPE & AMENITY PRODUCT UPDATE

Our comprehensive news content and extensive product coverage, coupled with its fast growing requested readership and independently ABC Audited Circulation of named readers combine to offer you the perfect publication for your promotion campaign.

## DIGITAL INTERACTIVE MAGAZINE

Each monthly magazine is emailed to a registered total of over 8500 email addresses. The online viewer can interact with the digital magazine using the online enquiry service and advertisement weblink facilities, taking the viewer to your website. The digital magazine is also made available on our daily updated website - [www.landscapeandamenity.com](http://www.landscapeandamenity.com)



## FREE ENQUIRY SERVICE

Good quality new business enquiries are generated via our 24/7 independent enquiry service from both advertisements and editorial news. The in-print reader and on screen view can submit their contact details as an enquiry, and data is emailed within 24 hours to your product manager, sales manager and marketing manager.

## EDITORIAL eBULLETIN

A vital interactive information source. We update our registered total of over 8500 email addresses of new & improved products and services via our regular Editorial eBulletin service. Once read, the online viewer can use our 24 hour free enquiry service and submit contact details, as well as use the weblink from the article to your own website.

## PLAY & ACTIVITY TODAY

A quarterly supplement published in association with the API (Association of Play Industries), designed to update purchaser & specifiers of sports & play ground equipment including safety surfacing. Play & Activity Today is also emailed as a digital interactive magazine to a further 3000 individuals working specifically in sport & play sectors across the UK.



## MACHINERY DIGITAL UPDATE

Landscape, groundcare and amenity machinery users will have instant access to a video library of demonstrations and machinery in action. Once emailed, the online viewer will be able to select products of relevance and watch video footage or photography animation – creating their own desk-top demonstration.

**ALSO AVAILABLE...**Digital Brochures, Product Cards, Direct Mailing, eFlyers and Literature Inserts



Amenities Manager - AMENITY AND SPORTS GROUNDS SUPERVISOR - Arborist & Landscape Gardener - ARCHITECT - Architectural & Landscape Officer - ARCHITECTURAL POLICE LIAISON OFFICER - Area Parks Officer - BUILDING OFFICER (GROUNDS & GARDENS) -Caravan Park Manager - CARETAKER - Cemeteries Manager - CHAIR PARISH COUNCIL - Chief Gardener - CHILDRENS PLAY AREA OFFICER - Clerk To Parish Council - COMMUNITY PARKS OFFICER - Consultant Architect - CONTRACTOR - Corporate Procurement Officer - COUNCIL CONTRACTOR - Country Parks Officer - COUNTRYSIDE & LANDSCAPE OFFICER - County Forestry Officer - COURSE SUPERINTENDENT - Creative Director - CRIME PREVENTION DESIGN - Cultural Development Manager - DEPUTY HEAD GARDENER - Deputy Head Groundsman - DESIGN & PROJECT MANAGER - Design Landscaper - DIRECTOR OF ARCHITECTURE - Director of Children Services - DIRECTOR OF FACILITIES - Director of Open Spaces - DIRECTOR OF SPORT & RECREATION - District Parks Officer - ECONOMIC DEVELOPMENT OFFICER - Environment Officer - ESTATE & BUILDINGS MANAGER - Estate Bursar - FACILITIES MANAGER - Fencing Contractor - FIXED PLAY FOREMAN - Force Crime Reduction Unit - FORESTER & GROUNDSMAN - Forestry Consultant - GARDEN DESIGNER - Golf Course Manager - GREENKEEPER & GROUNDSMAN - Green Space Manager - GROUND CARE DIVISION - Ground Maintenance - GROUP ESTATES MANAGER - Group Landscape Architect - HEAD DESIGNER - Head Gardener - HEAD OF BUILDING SCHOOLS FOR THE FUTURE - Head Of Countryside Service - HEAD OF ESTATES AND PLANNING - Horticulture Officer - HOUSE & GROUNDS MANAGER - Land & Street Services Officer - LANDSCAPE ARCHITECT - Landscape & Design Officer - LANDSCAPE & RECREATION MANAGER - Landscape Contractor - LEISURE DEVELOPMENT OFFICER - Maintenance & Grounds - MANAGER OF CAMPUS SERVICES - Open Space Manager - OPERATIONAL DIRECTOR - Outdoor Facilities Manager - OUTDOOR DESIGN - Parish Clerk - PARISH RANGER - Park & Open Space Manager - PARKS & AMENITIES MANAGER - Partner & Architect - PLANNING CONSULTANT - Plant Operator / Landscape - PLAY DESIGN OFFICER - Play Strategy Officer - PLAYGROUNDS OFFICER - Principal Landscape Architect - PROCUREMENT OFFICER - Professional Gardener - PROJECT & ESTATES MANAGER - Purchasing Manager - RANGER TEAM LEADER - Recreation Manager - RECREATIONAL DEVELOPMENT OFFICER - Rural Development Officer - SCHOOLS & AMENITIES OFFICER - Senior Garden Designer - SENIOR GREEN KEEPER - Senior Groundsman - SENIOR HORTICULTURAL OFFICER - Senior Landscape Architect - SENIOR PARKS & AMENITIES OFFICER - Skilled Arborist - SOFT LANDSCAPE MANAGER - Specialist Amenity Consultant - SPORTS FIELD CONSTRUCTION - Sports Ground Manager - SPORTS TURF MAINTENANCE - Stadium Manager - STREETSCENE MANAGER - Horticulture - TOWN AMENITIES OFFICER - Town Planner - TOWNCARE MANAGER - Tractor Operative - TREE CONSULTANT - Trustee - URBAN DESIGNER - Urban Forestry Manager - URBAN PARKS OFFICER - Weed Control Manager - WOODLAND GARDENER

The independent Audit Bureau of Circulation (ABC) annually audits & verifies our circulation of 13,687 named readers and has done for over ten years.



In 2010, Landscape & Amenity in addition to its existing registered data will use Glenigan, an online information portal website endorsed by the Chartered Institute of Building (CIOB).

Glenigan provides immediate access to those currently involved in tendered UK development projects such as urban regeneration, architectural landscapes and the creation of sports/play facilities before construction. Examples of Glenigan data can be found over the page.



**LOCAL AUTHORITIES/COUNTY & PARISH COUNCILS** .....5246  
Landscape & Amenity Departments, Parks & Open Space Officers/Managers, Grounds Maintenance, Sports & Leisure Departments, Greenkeepers & Groundsmen, Procurement Officers, Landscape Architects, Town Planning/Urban Environment Officers

**LANDSCAPE CONTRACTORS & PROFESSIONAL GARDENERS** .....2675  
Private Contractors, Managers, Engineers, Directors & Chief Executives, Specialist Arboricultural Contractors and Horticulture Consultants.

**URBAN PLANNING & ARCHITECTURAL DESIGN** .....2154  
Landscape Architects, Town Planning Consultants, Urban Development Officers, Architectural Technicians, Surveyors

**GROUNDSMEN** .....2096  
Universities, Colleges, State & Independent Schools, Theme Parks, Entertainment Venues, Caravan Parks, Professional & Non-professional Sports Clubs inc. League & Non-league football, bowls, rugby, cricket and major athletic venues.

**GOLF COURSES** .....1110  
Private Head Greenkeepers, Golf Course Consultants, Managers and Owners

**PRIVATE ESTATES, NATIONAL TRUST & ENGLISH HERITAGE** .....406  
Estate Managers, Gardeners & Groundsmen, Park Rangers, Operations, Managers and Trustees

**TOTAL** **13,687**

<b>AND THE REST...</b>	
HORTICULTURE WEEK	.....9451
AMENITY MACHINERY EQUIPMENT	.....8230
PITCHCARE	.....7238
TURF PROFESSIONAL	.....7000
GREENKEEPER INTERNATIONAL	.....6800
THE LANDSCAPER	.....5750
SPORTS TURF AMENITY LEISURE	.....5000
THE GROUNDSMAN	.....5000
GREEN PLACES	.....3000



Total projects: 73,040  
Total companies: 68,044  
Total contacts: 126,219



- Home
- Projects
- Company
- News
- Market Intelligence
- Search
- My Favourites
- My Glenigan
- About

## Hard Landscaping/Footpaths ?

Newark, Nottinghamshire  
Last modified 2 months ago (Wednesday, 26 August 2009)

[Edit favourite](#) | [Request an update](#) | [View map](#) | [Similar projects](#) | [Notes](#) ?

**Project ID:** 09191950  
**Project name:** Phase 2  
**Site name:** Sconce And Devon Park  
**Site address:** Boundary Road  
Newark  
Nottinghamshire  
NG24 4  
**Start date:** 12 Aug 2009  
**Contract period:** 4 Month(s)

### Additional Information

The Heritage Lottery Fund has provided £1 million towards this scheme. This is Phase 2 of a 4 Phase development. Phase 1 can be viewed on project ID: 07097696.

### Latest Information ?

Work has commenced on site.  
Posted 2 months ago (Wednesday, 26 August 2009)

### Contacts ?

**Client:** **Newark & Sherwood District Council**  
Kelham Hall  
Kelham  
Newark  
Nottinghamshire  
NG23 5QX  
**Tel:** 01636 650000  
**Fax:** 01636 708361  
**Email:** corporate@nsdc.info

- Contact:** [Andy Statham](#) (Head of Environmental Services)
- Contact:** [Jim Besson](#) (Community Services Manager)
- Contact:** [Philip Beard](#) (Parks & Amenities Manager)

**Architect:** **MHI Ltd**  
Martin Forster House  
10 Appleton Gate  
Newark  
Nottinghamshire  
NG24 1JY  
**Tel:** TPS screened  
**Fax:** 01636 671113  
**Email:** enquiries@mhidesign.co.uk

- Contact:** [Richard Mason](#) (Architect)

**Civil Contractor:** **Bodill Construction Ltd**  
Park Place  
Robey Close  
Linby  
Nottingham  
NG15 8AA  
**Tel:** 0115 968 0700  
**Fax:** 0115 968 0118  
**Email:** info@bodill.co.uk

- Contact:** [Mike Gill](#) (Quantity Surveyor)

**Estimated**

Newark, Nottinghamshire  
**£1,400,000**

**Stages**

<b>Planning stage:</b>	Planning not Required <span>?</span>
<b>Contract stage:</b>	Start on Site <span>?</span>

**Planning** ?

<b>Planning authority:</b>	Newark & Sherwood
<b>Development type:</b>	Reurb and New
<b>Funding type:</b>	Public
<b>Units:</b>	1

**General** ?

<b>Created:</b>	15/06/2009
<b>Last modified:</b>	26/08/2009
<b>Project ID:</b>	09191950

### Unsuccessful Bidders

The following companies were unsuccessful in their bid for this project:

#### [Fitzgerald Contractors Ltd](#)

**Address:** 125 Cheston Road  
Aston  
Birmingham  
West Midlands  
B7 5EA  
**Tel:** 0121 326 0402  
**Fax:** 0121 328 1963

Description	Categories	Notes
<p><b>Civil Text</b></p> <p>Scheme comprises hard landscaping works and footpaths to Sconce And Devon Park. The associated works include access roads, enabling, sewer systems, infrastructure and landscaping.</p>		



Total projects: 73,040  
Total companies: 68,044  
Total contacts: 126,219



- Home
- Projects
- Company
- News
- Market Intelligence
- Search
- My Favourites
- My Glenigan
- About



## Play Areas ?

Sunderland, Tyne & Wear  
Last modified 3 months ago (Friday, 31 July 2009)

[Edit favourite](#) | [Request an update](#) | [View map](#) | [Similar projects](#) | [Notes](#) ?

**Project ID:** 09248910  
**Project name:** 2009/S 145-212202  
**Site name:** 16 Play Areas  
**Site address:** Sunderland  
Tyne & Wear  
**Start date:** Jan 1, 2010  
**Contract period:** 3 Months

### Additional Information

Some of the play facilities as part of the Play Pathfinder scheme are: Barnes Park 1, Barnes Park 2, Grangetown, Farrington, Millfield Chill Out, Silksworth Recreation Park and Washington Wheeled Sports Park.

### Latest Information ?

Colour Urban Design has been appointed for design and project management services.  
Posted 3 months ago (Tuesday, 4 August 2009)

### News

#### Colour Urban Design awarded play contract

Colour Urban Design has been appointed by Sunderland City Council to design 16 play areas as part of the Play Pathfinder scheme. It will cost £2 million to construct and refurbish the play areas...  
Posted 3 months ago (Friday, 31 July 2009)

### OJEU Information

**2009/S 145-212202**

UK-Sunderland: design consultancy services

### Contacts ?

**Client:** **Sunderland City Council**  
Civic Centre  
Burdon Road  
Sunderland  
Tyne & Wear  
SR2 7DN  
**Tel:** 0191 520 5555  
**Fax:** 0191 553 5794  
**Email:** [enquiries@sunderland.gov.uk](mailto:enquiries@sunderland.gov.uk)

**Consulting Civil Engineer:** **Colour Urban Design Ltd**  
Milburn House  
Dean Street  
Newcastle-Upon-Tyne  
Tyne & Wear  
NE1 1LE  
**Tel:** 0191 242 4224  
**Email:** [design@colour-udl.com](mailto:design@colour-udl.com)

**Contact:** **Kevin Marshall** (Assistant Procurement Manager)

**Contact:** **Emma James** (Associate)

#### Estimated

Sunderland, Tyne & Wear  
**£2,000,000**

#### Stages

**Planning stage:** Planning not Required ?  
**Contract stage:** Pre-Tender ?

#### Planning ?

**Planning authority:** Sunderland  
**Development type:** Refurb and New  
**Funding type:** Public

#### General ?

**Created:** 31/07/2009  
**Last modified:** 31/07/2009  
**Project ID:** 09248910

#### Materials ?

Construction - planting site works.

Description Categories Notes

#### Civil Text

Scheme comprises construction and refurbishment of 16 play areas as part of the Play Pathfinder.



**Total projects:** 73,040  
**Total companies:** 68,044  
**Total contacts:** 126,219



- Home
- Projects
- Company
- News
- Market Intelligence
- Search
- My Favourites
- My Glenigan
- About

## Sports Pitches & Synthetic Pitch ?

Southampton, Hampshire  
Last modified 7 months ago (Tuesday, 24 March 2009)

[Edit favourite](#) | [Request an update](#) | [View map](#) | [View plans](#) | [Similar projects](#) | [Notes](#) ?

**Project ID:** 09099546  
**Site address:** Test Playing Field  
69 Redbridge Lane  
Southampton  
Hampshire  
SO16 9BP  
**Start date:** Feb 15, 2010  
**Contract period:** 6 Months (approx.)

### Additional Information

Please note the addition of the quantity surveyor. Start date is a guideline only.

### Latest Information ?

Detailed plans submitted.  
Posted 7 months ago (Tuesday, 24 March 2009)

### Tender Information

Contract details to be confirmed.  
Posted 7 months ago (Tuesday, 24 March 2009)

### Contacts ?

**Client:** **Southampton Solent University**  
East Park Terrace  
Southampton  
Hampshire  
SO14 0YN  
**Tel:** 023 8031 9000  
**Fax:** 023 8023 2609  
**Email:** [tim.kenyon@solent.ac.uk](mailto:tim.kenyon@solent.ac.uk)  
 **Contact:** **Jo Nickson** (Project Manager)  
 **Contact:** **Phil Green** (Sports Development Director)

**Architect:** **Pope Priestley Associates**  
Ferry House  
Canute Road  
Southampton  
Hampshire  
SO14 3FJ  
**Tel:** 023 8033 5228  
**Fax:** 023 8063 2886  
**Email:** [info@popepriestley.co.uk](mailto:info@popepriestley.co.uk)  
 **Contact:** **Dennis Priestley** (Principal)

**Quantity Surveyor:** **Davis Langdon**  
Brunswick House  
Brunswick Place  
Southampton  
Hampshire  
SO15 2AP  
**Tel:** 023 8033 3438  
**Fax:** 023 8022 6099  
**Email:** [info@davislangdon.com](mailto:info@davislangdon.com)  
 **Contact:** **Jane Beeson** (Quantity Surveyor/Partner)

#### Guideline

Southampton, Hampshire  
**£500,000** ?

#### Stages

<b>Planning stage:</b>	Detailed Plans Submitted <span style="float: right;">?</span>
<b>Contract stage:</b>	Pre-Tender <span style="float: right;">?</span>

#### Planning ?

**Planning authority:** Southampton  
**Application number:** 09/00191/FUL  
**Application date:** 09/03/2009  
**Development type:** New  
**Funding type:** Public  
**Stores:** 1  
**Units:** 1

#### General ?

**Created:** 22/03/2009  
**Last modified:** 24/03/2009  
**Project ID:** 09099546

#### Materials ?

Construction - black top surfacing, fencing, lighting columns, turfing/grass site works.

- Description
- Categories
- Notes

#### Scheme Description

Scheme comprises formation of two sports pitches, a floodlit soccer pitch and a floodlit multi-use games area synthetic pitch with a new single-storey building to be used as changing facilities and teaching/social space with associated fencing, parking and vehicular access from Lower Brownhill Road.

#### Planning Description

An application (ref: 09/00191/FUL) for detailed planning permission was submitted to Southampton C.C.

#### Civil Text

Scheme comprises formation of two sports pitches, a floodlit soccer pitch and a floodlit multi-use games area synthetic pitch with a new single-storey building to be used as changing facilities and teaching/social space with associated fencing, parking and vehicular access from Lower Brownhill Road.

## REGULAR CATEGORIES

- News & Product Developments
- Street Scene
- Pedestrianisation & Hard Landscaping
- Recycling & Waste Management
- Machinery, Plant & Vehicles
- Sports & Play

### JANUARY

- Landscaping Case Study
- Street Scene  
(including Street Furniture, Lighting & Anti Graffiti)
- Stone & Aggregates
- Diggers & Excavators
- Grass Seed

### FEBRUARY

- Jane Carley Report: Utility Vehicles & Work Trucks
- BIGGA/BTME Exhibition Review
- EcoBuild Exhibition Preview
- Fencing & Security Products
- MACHINERY DIGITAL UPDATE

#### PLAY & ACTIVITY TODAY

- \* News & Product Updates
- \* Water Play
- \* Timber Play
- \* API & RoSPA Comment
- \* Play Scheme Case Study

### MARCH

- Jane Carley Report: Ride-On Mowers
- Amenity Pesticides & Spraying Equipment
- Commercial Vehicles
- Aerators

### APRIL

- Jane Carley Report: Sports Turf Maintenance
- Ground Reinforcement & Retaining Walls
- Signage
- Water Features

### MAY

- Landscaping Case Study
- Water Management, Irrigation & Drainage
- Recycling & Waste Management
- Pedestrian Mowers
- MACHINERY DIGITAL UPDATE

#### PLAY & ACTIVITY TODAY

- \* News & Product Updates
- \* PlayFair 2010 Exhibition Preview
- \* Safety Surfacing
- \* API & RoSPA Comment
- \* Metal Play

### JUNE

- Jane Carley Report: Tractors
- Pedestrianisation & Hard Landscaping
- Training & Education
- Amenity Pesticides & Spraying Equipment

### JULY/AUGUST

- Jane Carley Report: Saltex (New Product Launches)
- IOG Saltex Exhibition Preview
- Shelters & Covered Walkways

#### PLAY & ACTIVITY TODAY

- \* News & Product Updates
- \* BMX Tracks
- \* MUGAs
- \* API & RoSPA Comment
- \* Skate Ramps

### SEPTEMBER

- Jane Carley Report: Forestry Equipment
- IOG Saltex Exhibition Rreview
- Fencing & Security Products
- Recycling & Waste Management
- Brushcutters

### OCTOBER

- Jane Carley Report: Winter Maintenance - Vacuums, Sweepers, Collectors & Scarifiers
- IOG Scotsturf Exhibition Preview
- Trees, Shrubs & Planting
- Trailers
- MACHINERY DIGITAL UPDATE

### NOVEMBER/DECEMBER

- Landscaping Case Study
- BIGGA/BTME 2011 Exhibition Preview
- Water Management, Irrigation & Drainage

#### PLAY & ACTIVITY TODAY

- \* News & Product Updates
- \* Sports Fencing
- \* API & RoSPA Comment
- \* Teen Shelters

**Copy deadline: Last Friday of month preceding publication month Copy sent to: [neilh@tspltd.co.uk](mailto:neilh@tspltd.co.uk)/[katie@tspltd.co.uk](mailto:katie@tspltd.co.uk)**



All advertisement rates quoted using £18.50 psc and per insertion. Agency Entitlement is 10%.  
Alternative sizes are available upon request, please ask for details.

	1 Insertion	3 Insertions	6 Insertions	10 Insertions
Full Page Tabloid	£4200	£3700	£3200	£2700
Half Page Tabloid	£2100	£1900	£1700	£1400
Quarter Page Tabloid	£1055	£1000	£900	£750
25cm x 4 columns (A4 page)	£1850	£1650	£1450	£1200
7cm x 6 columns (Front Cover Solus)	£1055	£950	£850	£700
13cm x 4 columns ( 1/2 A4 page)	£960	£860	£810	£660
15cm x 2 columns	£555	£500	£450	£375
13cm x 2 columns ( 1/4 A4 page)	£480	£420	£370	£320
Back Cover - Plus 10%				

## PRODUCT & LITERATURE PANELS

Product & Literature Panels provide you the advertiser with an ideal opportunity to promote your newest products and equipment through product literature description and product photography.

90mm (h) x 90mm (w), and a standard format to include company branding, approximately 80 literature words and colour photography.

Costing	£250	£225	£200	£175

## DISPLAY ADVERTISEMENT SIZES

Advertisement sizes are calculated per single column cm depth

### Widths

1 col, 42mm - 2 col, 89mm  
3 col, 138mm - 4 col, 183mm  
5 col, 230mm - 6 col, 277mm

**Tabloid page** - 420mm H x 297mm W add  
3mm all round for bleed

**Tabloid DPS** - 420mm H x 594mm W  
add 3mm all round for bleed

### Product Card Sizes

Trim Size: 98 mm x 130mm  
Bleed Size: 110mm x 138mm

## MECHANICAL DATA

**Email material to: [copy@tspltd.co.uk](mailto:copy@tspltd.co.uk)**

Material must be supplied on Mac readable discs or via email or FTP.  
PDF's should be print ready with all fonts and images embedded (min 300dpi).

Documents must be Quark Xpress.

Images must be saved as TIFF or EPS minimum 300dpi at 100% size.

Ensure all images are CMYK not RGB.

Ensure all colours are CMYK not RGB or SPOT including Illustrator files.

Inserts accepted by negotiation.

Artwork requiring further production may levy further charges which will be pre-quoted prior to implementation.

Cancellations in writing by the first working day of the month prior to the month of publication as our standard terms and conditions of sale state.



Landscape & Amenity Product Update is continually supported by a daily updated website - [www.landscapeandamenity.com](http://www.landscapeandamenity.com)

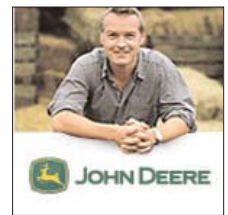
Each day our editorial team update our news section with current news & announcements across the landscape, groundcare and amenity sectors.

The online viewer has access to an extensive product news directory, coupled with video footage demonstrations and product photography slide-shows. Alongside is an option to view our interactive Landscape & Amenity Product Card pack, with each product card acting as a hyperlink to the home page of the advertiser. Added benefit can be found from a detailed 2010 Events Guide allowing the online viewer to choose several exhibitions to attend across the UK & Europe.



Home Page

TYPE	SIZE	ARTWORK TYPE	HOME PAGE PRICE	CATEGORY SPONSORSHIP
Banner	468 x 60 pixels	GIF, JPEG, SWF (Flash), HTML	£250 (1 month)	£125 (1 month)
Skyscraper	120 x 600 pixels	GIF, JPEG, SWF (Flash), HTML	£300 (1 month)	£150 (1 month)
Button	140 x 140 pixels	GIF, JPEG	£100 (1 month)	£50 (1 month)



Banner & Button

## PRODUCT NEWS LISTINGS

Our online Product News editorial section enable the viewer to gain immediate access to detailed products news. Your company has the opportunity to sponsor a product news section in relation to your products for as little as **£250.00 for 12 months**. Sponsorship of a section includes approximately 10 minutes of video footage, or 8/10 product photographs in a photography slide-show format. Corporate branding, full contact details including email & web link facilities coupled with 250 words about your company are also included in the above cost.



## LANDSCAPE & AMENITY PRODUCT EBULLETIN

Direct to the desktop! Each month, we keep our online viewers up to date with the very latest product news & announcements with the Landscape & Amenity Product eBulletin service direct to their desktop.

8655 registered email addresses from the ABC Audited magazine Circulation are kept informed of breaking news, product tests, exhibitions & events, product launches and legislation changes. Once received, the online viewer will read each article on our website and then apply for product information via our 24/7 viewer enquiry service, or hyperlink direct to the home page of the company mentioned in the article.

The news story is then added to [www.landscapeandamenity.com](http://www.landscapeandamenity.com), with product enquiry services still operative via the online enquiry service. There are between 5-8 news stories per eBulletin, and are available for only **£135.00**



Product News Sponsor



Product eBulletin



## GIVE YOUR NEW CUSTOMER A DESKTOP DEMONSTRATION!

Machinery Digital Update will give on screen access to a video library of landscape, groundcare and amenity machinery demonstrations & equipment in action.

As seasons change, this digital page-turn video library will be emailed three times a year to our registered total of 8655 email addresses during the months of February, May and October.

The online viewer can also weblink from Machinery Digital Update to your website.

---

### VIDEO SHOWCASE

Large on screen video footage of your product demonstration including commentary. Animated logo branding and full contact details including email & weblink facilities as well as a detailed product overview of approximately 200 words.

Single Issue: **£225.00**    Three Issues: **£185.00**

### ANIMATED ADVERTISEMENT

Bring your machinery & equipment to life and animate your magazine advertisement using our flash animation software.

Our on screen viewers will watch your advertisement come to life, including video hosting capabilities, photography, diagram and logo.

Single Issue: **£350.00**    Three Issues: **£300.00**

### ARTWORK & ADVERTISEMENT COPY DEADLINES

**February Issue:    FRIDAY 12TH FEBRUARY**

**May Issue:         FRIDAY 14TH MAY**

**October Issue:     FRIDAY 15TH OCTOBER**

Costs include artwork animation setting by TSP Media



Landscape & Amenity Product Cards enable you to make an immediate impact with those who have a fundamental part to play in landscaping projects, amenity design & pedestrian planning across the UK & Europe.

During the months of March and November we circulate Landscape & Amenity Product Card packs to a printed circulation of **6560** named individuals.

We also email the Landscape & Amenity Product Card pack to **8655** registered email addresses in an interactive digital format.

Our 24/7 online enquiry service is accessible for each card which enables the online viewer to hyperlink direct to your website from the on-screen card.

We then host the Product Card pack online for a duration of three months, with both enquiry & hyperlink services fully operative.

Why not view [www.landscapeandamenity.com](http://www.landscapeandamenity.com) and see our latest Product Card pack.....



## PACK CIRCULATION

LANDSCAPE ARCHITECTS	2091
LOCAL AUTHORITIES	1953
LANDSCAPE CONTRACTORS	1155
GROUNDSMEN	687
UNIVERSITIES, COLLEGES & SCHOOLS	334
SPORTS CLUBS	168
GOLF COURSES (Under construction or new)	109
NATIONAL TRUST & ENGLISH HERITAGE PROPERTIES	63
<b>TOTAL</b>	<b>6560</b>

## ISSUE MONTHS

Landscape & Amenity Product Cards are published & hosted Online 2 times per annum.

**March - SPRING PACK**

**November - AUTUMN PACK**

## PRODUCT CARD RATES

1 Card .....	£550.00
2 Cards .....	£425.00

All advertisement rates quoted include a digital and printed version of your Landscape and Amenity Product Card.

## PRODUCT CARD SIZES

Trim Size: 104mm x 138mm

Bleed Size: 110mm x 144mm



# Landscape & Amenity

PRODUCT UPDATE



[www.landscapeandamenity.com](http://www.landscapeandamenity.com)

PUBLISHER - David Stiles - [david@tspltd.co.uk](mailto:david@tspltd.co.uk)

EDITOR - Neil Hancock - [neilh@tspltd.co.uk](mailto:neilh@tspltd.co.uk)

EDITORIAL CO-ORDINATOR - Katie Wilcox - [katie@tspltd.co.uk](mailto:katie@tspltd.co.uk)

COMMERCIAL MANAGER - Paul Hawkins - [paulh@tspltd.co.uk](mailto:paulh@tspltd.co.uk)

ADVERTISEMENT SALES - Marc Cooper - [marc@tspltd.co.uk](mailto:marc@tspltd.co.uk)

ADVERTISEMENT PRODUCTION - Jonny Stiles - [copy@tspltd.co.uk](mailto:copy@tspltd.co.uk)

DESIGN & ARTWORK - Natalie Lake - [nat@tspltd.co.uk](mailto:nat@tspltd.co.uk)

CIRCULATION MANAGER - Becki Everitt - [becki@tspltd.co.uk](mailto:becki@tspltd.co.uk)

ONLINE MANAGER - Mike Essex - [mike@tspltd.co.uk](mailto:mike@tspltd.co.uk)

**TSP**MEDIA  
TANNER STILES PUBLISHING

TSP Media Ltd  
Grosvenor House, Central Park,  
Telford, TF2 9TW  
T: 01952 234000 F: 01952 234003  
E: [info@tspltd.co.uk](mailto:info@tspltd.co.uk)  
[www.tspltd.co.uk](http://www.tspltd.co.uk)