

ARCHITECT
BUILDING CONTRACTOR
BUILDING SURVEYOR
CHAIRMAN
CHIEF BUYER
CLIENT
CONSTRUCTION OFFICER
CLERK OF WORKS
DESIGNER
DESIGN MANAGER
DEVELOPER
DIRECTOR
ELECTRICAL ENGINEER
ESTATES MANAGER
ESTIMATOR
FACILITIES MANAGER
GENERAL MANAGER
HEAD OF PROCUREMENT
HEATING ENGINEER
HOUSING ASSOCIATION
HOUSEBUILDER
INTERIOR DESIGNER
LANDSCAPE ARCHITECT
LANDSCAPE CONTRACTOR
LEISURE MANAGER
M&E CONSULTANT
MATERIALS BUYER
OWNER
PROJECT MANAGER
PLANNING OFFICER
PROPERTY SERVICES
PREMISES MANAGER
PURCHASING
QUANTITY SURVEYOR
STRUCTURAL ENGINEER
SURVEYOR
TECHNICAL ENGINEER

THE KEY TO SPECIFICATION

CREATING INNOVATIVE MEDIA OPPORTUNITIES FOR TODAY'S ARCHITECTURAL & BUILDING INDUSTRY

We believe that our magazines and media products offer you the best opportunities to reach key decision makers in the Architectural and Building marketplace. The Tanner Stiles Publishing philosophy is simple, we know that we have to compete for your business and to do that effectively we have to excel in every aspect of *our* business.

- We invest heavily in editorial content to ensure that we are at the forefront of this increasingly legislation led business.
- Our dedicated database management team are committed to ABC audited circulations and ensure that our distribution lists are 100% up to date.
- Our in-house designers are constantly improving the appearance of our magazines to provide readers with eye catching and informative editorial content.
- Our IT department continues to develop new methods of delivering enquiries to advertisers as quickly as possible. We currently achieve a 24-hour turnaround.
- Our unique online Project Response Analysis System gives you instant access to sales enquiries with key information about the enquirers and the projects they are working on.

When you promote your business with us we guarantee that you will reach every named specifier currently working on a live building project anywhere in the UK. Our product offer does not stop there, with a host of other marketing services that includes direct mail, digital media and web based platforms we can help you deliver your message in a variety of creative and innovative ways.

SPECIFICATION MAGAZINE

Specifiers including Architects, Contractors, Developers, QS, Clients, Project Managers, M&E Consultants & Structural Engineers.

HOUSING SPECIFICATION

Architects, Housebuilders, Housing Developers, Housing Associations, Residential Social Landlords, Local Authorities & Almo's.

HOTEL, SPORT & LEISURE

Architects, Interior Designers, Facilities Managers, Directors/Owners of Hotel, Sport & Leisure Facilities in the Private & Public Sector.

SPECIFICATION PRODUCT UPDATE

Architects, Contractors, Developers, QS, Clients, Project Managers, M&E Consultants & Structural Engineers.

PROJECT MANAGEMENT FOR BUILDING CARDS

Architects, Contractors, Developers, QS, Clients, Project Managers, M&E Consultants, Structural & Civil Engineers.

PROJECT RESPONSE ANALYSIS

RATES & MECHANICAL DATA

DIRECT MAIL

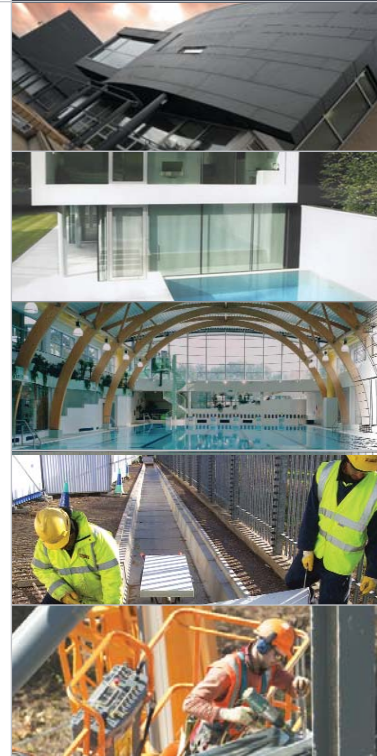
LITERATURE LIVE

WEBSITES

All of our publications have dedicated websites with unique digital ways of reaching your audience.

Tanner Stiles Publishing Ltd
Grosvenor House, Central Park, Telford TF2 9TW
Tel: 01952 234000
Fax: 01952 234003
info@tspltd.co.uk
www.tspltd.co.uk

CONTENTS




Tanner Stiles
PUBLISHING LTD



The Sage Gateshead

The Barbour Room



Specification

MAGAZINE

In the space of four years Specification Magazine has established itself as the preferred read for specifiers throughout the Architectural & Building sector. Its eclectic mix of industry news, product development and in depth industry led articles has proved to be a winning formula with its readership. Published monthly, Specification Magazine has consistently increased its ABC requested circulation, year on year and is currently experiencing the fastest growth in requested readership of any title in the Architectural and Building sector.

Specification Magazine's market share too has now grown some 140% in the last twelve months, a reflection we believe, not only in the quality of enquiries that we generate, but also the fresh and easy to read layout of the magazine. Printed on quality paper to reproduce our customers brand in a professional format, Specification Magazine now sits as the preferred choice on many Architectural and Building media schedules. To find out how Specification Magazine and its increasingly successful website www.specificationmagazine.com can start working for you, please call one of our sales managers today.



FEATURE LED FRONT COVER



INFORMATIVE PRODUCT NEWS



TOPICAL NEWS CONTENT



IN DEPTH INDEPENDENT FEATURE ARTICLES

CIRCULATION

Specification Magazine really is in touch with your target audience. Each issue of the publication is mailed out to an ABC audited circulation which has experienced a 109% increase in its individual requested readership in the last twelve months. Each issues circulation is meticulously researched to ensure that we are reaching key specifiers when they are actively involved with live projects.

The ABC logo consists of the letters 'ABC' in a bold, white, sans-serif font, centered within a black square. A thin red horizontal line is positioned directly beneath the letters.

Architects	8,291	45%
Architectural Technologist/Technicians	1,135	6%
Landscape Architects	801	4%
Housebuilders, Contractors & Developers	3,616	20%
Quantity & Building Surveyors	1,603	9%
Directors & Clients	1,228	7%
Project Managers	874	5%
Structural, Mechanical & Electrical Engineers	404	2%
Interior Designers	398	2%
TOTAL	18,350	100%

TESTIMONIAL

“For a magazine to experience the growth that Specification Magazine has achieved in the Architectural & Building media sector in such a relatively short space of time is unprecedented. They have consistently generated good quality enquires for my company and I like the professional and innovative way that they do business.”

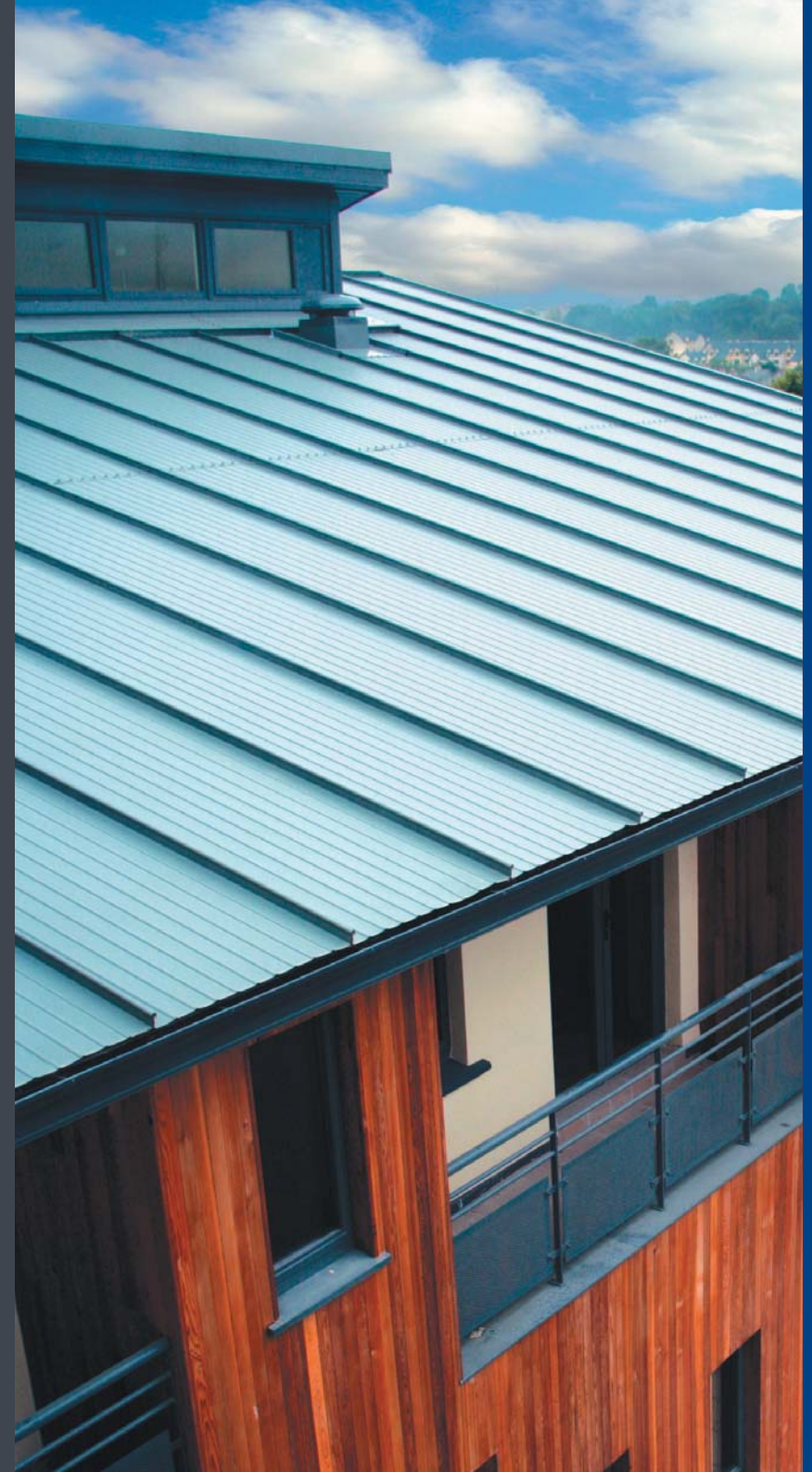
Paul Wilkinson - Hambleside Danelaw

REGULAR CATEGORIES

Editor's Choice	Heating & Ventilation
New Developments	Doors, Windows & Entrance Systems
Roofing, Cladding & Insulation	Kitchens & Bathrooms
External Works	Flooring
Building Services	Lighting & Interiors

WEBSITE

www.specificationmagazine.com



JANUARY 2009

- **ROOFING**
*Flat, Pitch & Green Roofs
Rooflights, Roof Windows & Hatches*
- **DRAINAGE & PLUMBING**
*Above & Below Ground Drainage
Flood Protection*
- **INSULATION**
*Thermal & Acoustic Insulation
Energy & Efficiency*
Special Report - Health
Editorial Copy Date: 13/12/08

FEBRUARY 2009

- **EXTERNAL WALL FINISHES**
*Rainscreen Cladding & Curtain Walling
Solar Control, Brise Soleil, External Shutters*
- **STRUCTURES**
*Structural Timber / Metalwork
External Envelope*
- **PAINTS, STAINS & COATINGS**
*Decorative Finishes
Intumescent Coatings*
Special Report -
Innovations for the Built Environment
(ecobuild/futurebuild/cityscape)
Editorial Copy Date: 10/01/09

MARCH 2009

- **DOORS, WINDOWS & ENTRANCE SYSTEMS**
*Architectural Ironmongery
Blinds, Louvres Shutters & Screens*
- **GLASS & GLAZING**
*Security & Fire Resistant Glass
Screens & Solar Control*
- **SAFETY, SECURITY & FIRE PROTECTION**
*Access Control, Barriers & Fencing
Fire Detection & Alarm Systems*

Special Report - Education
Editorial Copy Date: 7/02/09

APRIL 2009

- **BRICKS, BLOCKS & LINTELS**
*Mortars & Admixtures
Brick Systems*
- **GROUND & CONCRETE WORK**
*Piling & Foundations
Precast Concrete Systems*
- **MODERN METHODS OF CONSTRUCTION**
*Offsite Construction
System & Modular Buildings*
Special Report - Urban Development
Editorial Copy Date: 6/03/09

MAY 2009

- **FLOOR & WALL FINISHES**
*Entrance Matting, Carpets & Tiles
Underfloor Heating
Wood, Vinyl, Linoleum and Resin Surfaces*
- **INTERIORS, CEILINGS & PARTITIONS**
*Lighting & Electric's
Furniture & Equipment*
- **ACOUSTICS**
*Airborne Sound Travel
Part E*
Special Report - 2012 Olympics
Editorial Copy Date: 11/04/09

JUNE 2009

- **ROOFING**
*Flat, Pitch & Green Roofs
Rooflights, Roof Windows & Hatches*
- **DRAINAGE & PLUMBING**
*Above & Below Ground Drainage
Flood Protection*
- **INSULATION**
*Thermal & Acoustic Insulation
Energy & Efficiency*
Special Report - Refurb & Restoration
Editorial Copy Date: 8/05/09

JULY/AUGUST 2009

- **EXTERNAL WALL FINISHES**
*Rainscreen Cladding & Curtain Walling
Solar Control, Brise Soleil, External Shutters*
- **STRUCTURES**
*Structural Timber / Metalwork
External Envelope*
- **PAINTS, STAINS & COATINGS**
*Decorative Finishes
Intumescent Coatings*
Special Report - Health
Editorial Copy Date: 13/06/09

SEPTEMBER 2009

- **DOORS, WINDOWS & ENTRANCE SYSTEMS**
*Architectural Ironmongery
Blinds, Louvres Shutters & Screens*
- **GLASS & GLAZING**
*Security & Fire Resistant Glass
Screens & Solar Control*
- **SAFETY, SECURITY & FIRE PROTECTION**
*Access Control, Barriers & Fencing
Fire Detection & Alarm Systems*
Special Report - Education
Editorial Copy Date: 12/08/09

OCTOBER 2009

- **BUILDING SERVICES**
*Heating, Ventilation & Air Conditioning
Underfloor Heating
Lifts & Stairs*
- **KITCHENS & BATHROOMS**
*Wash & Changing Room Facilities
Showers*
- **ENERGY USE/RENEWABLES**
*Photovoltaics
Ground & Air Source*
Special Report - Interbuild
Editorial Copy Date: 11/09/09

NOVEMBER/DECEMBER 2009

- **BRICKS, BLOCKS & LINTELS**
*Mortars & Admixtures
Brick Systems*
- **GROUND & CONCRETE WORK**
*Piling & Foundations
Precast Concrete Systems*
- **MODERN METHODS OF CONSTRUCTION**
*Offsite Construction
System & Modular Buildings*
Special Report - Sustainability
Editorial Copy Date: 9/10/09

JANUARY 2010

- **ROOFING**
*Flat, Pitch & Green Roofs
Rooflights, Roof Windows & Hatches*
- **DRAINAGE & PLUMBING**
*Above & Below Ground Drainage
Flood Protection*
- **INSULATION**
*Thermal & Acoustic Insulation
Energy & Efficiency*
Special Report - Health
Editorial Copy Date: 11/12/09

MONTHLY PRODUCT CATEGORIES

- **ROOFING, CLADDING & INSULATION**
- **FLOORS & WALLS**
- **DOORS, WINDOWS & ENTRANCE SYSTEMS**
- **BUILDING SERVICES**
- **DRAINAGE & PLUMBING**
- **KITCHENS & BATHROOMS**
- **INTERIORS & LIGHTING**





Housing Specification

Housebuilding in the United Kingdom and the way the UK houses its population is set to undergo a fundamental change in the next 20 years.

The government's recent housing green paper which details their affordable homes and homes for the future policy will, through new planning laws and green legislation, alter the way housebuilders and building material manufacturers currently do business.

Sustainability is the new buzzword in the industry and Housing Specification magazine has been launched to provide housebuilders and developers with an authoritative mix of news and comment specifically tailored to the demands of the modern housebuilding environment.

Housing Specification will include topics relevant to both the private and public sector, it will be innovative and objective, commenting on the new products and systems that are being designed to meet the demands of the green agenda. Housing Specification offers the same high standards of market coverage, print and design content that its sister title Specification Magazine is respected for. Investment in a highly researched and tightly controlled circulation will ensure that Housing Specification magazine is the preferred choice for achieving high impact visibility for both product and brand awareness advertising.



NEWS LED FRONT COVER



EDITORS LEADER



TOPICAL NEWS CONTENT



IN DEPTH INDEPENDENT FEATURE ARTICLES

CIRCULATION

ACTIVELY TARGETING KEY SPECIFIERS, BUYERS & PROCUREMENT OFFICERS ACROSS THE PRIVATE, PUBLIC, NEW BUILD AND REFURBISHMENT SECTOR.

CONTROLLED CIRCULATION - TERMS OF CONTROL

Specifiers and Purchasers of building products and materials, employees of house building companies, housing associations and local authorities employed in architecture, surveying, housing, health and safety, engineering, maintenance, technical services, estates, development, planning and purchasing. Plus chief executives and tenant representatives. Proprietors, partners and employees of private building contractors, architects and surveyors.

ABC Application approved 17th October 2007

THE UNIVERSE

HOUSEBUILDERS AND RESIDENTIAL DEVELOPERS

TOTAL NUMBER OF COMPANIES* 1500

HOUSING ASSOCIATIONS

Residential Social Landlords (RSL) 2125

Local Authority (LA) (ALMO'S) 2780

TOTAL** 4905

TOTAL UNIVERSE 6405

CIRCULATION

HOUSEBUILDERS AND RESIDENTIAL DEVELOPERS

TOTAL BY JOB TITLE/INDIVIDUAL 5491

HOUSING ASSOCIATIONS AND LOCAL AUTHORITIES

TOTAL BY JOB TITLE/INDIVIDUAL 8151

OTHER SPECIFIERS

GLENIGAN BY HOUSING PROJECT (INCLUDING ARCHITECTS IN THE PRIVATE/PUBLIC SECTOR) 4358

TOTAL CIRCULATION 18000

Actual example of project types drawn from local authority planning departments together with details of the job title functions extracted for use in our database.

Project: Luxury Homes	Project: Social Housing
Value: £2.2million	Value: £407,500,000
Client: Hartford Homes	Client: Easington District Council
Contact: James Greenhalgh	Project Manager: Mr Peter Davies
Position: Managing Director	Principal Architect: Mr Peter Davies
Architect: Cornerstone Architects	
Contact: Tony Lloyd Davies	
Position: Principal	

Project: 10,000 Residential Units (Refurb)	Contractors Involved on Projects include:
Value: £120,000,000	BMH Construction
Client: Aldwick Housing Association	Breyer Group
Contact: Mr Gary Goggins	Countryside Properties
Position: Director of Property & Procurement	Durkan Limited
	John Laing Plc
	Lovell Partnership
	Wilmott Dixon Construction Ltd

*source UK Housebuilders Directory property data

**source AMA research / trade estimates

EDITORIAL PROGRAMME

Whilst Housing Specification will ostensibly be news led, the magazine will also carry a range of feature articles, tender pages, industry forums, and special reports, designed to create a broad and informative editorial platform across the whole of the housebuilding & housing association sector.

These feature articles will be supported by regular category sections that will host product editorial, new literature, financial & specialist services.

Regular Categories

THE HOUSING ENVELOPE

Roofing
External Walls
Insulation

STRUCTURES

Offsite Construction
Structural Systems
Groundworks

SURFACES

Flooring
Internal Walls
Finishings

OPENINGS

Doors
Windows
Rooflights

SERVICES

Energy
Drainage
IT
Lighting

FIT-OUTS

Kitchens,
Bathrooms,
Home Office
Storage

DECORATION

Interior Furnishings
Furniture
Interior Lighting

FEBRUARY 2008

BRICKS & BLOCKS

Bricks, Blocks & Lintels
Ground & Concrete Work
Tanking & Waterproofing
Beam & Block Flooring
Stone & Masonry Products
Renders, Mortars & Plasters
Landscape & External Works

FORUM: THE CODE FOR SUSTAINABLE HOMES

SPECIAL REPORT - EXHIBITION PREVIEW
INNOVATIONS FOR THE BUILT ENVIRONMENT
(ECOBUILD/FUTUREBUILD/CITYSCAPE)

MARCH 2008

BUILDING SERVICES

Heating, Ventilation & Cooling
Community Heating
Underfloor Heating
Hot Water Supply Systems
Lifts, Stairs & Access

FORUM: DECENT HOMES STANDARD

SPECIAL REPORT - ACOUSTICS & SOUND INSULATION

APRIL 2008

ROOFING

Roofing, Cladding & Insulation
Roof Tiles, Slates and Thatch
Roof Ventilation & Accessories
Roof Lights and Windows
Roof Structures - Timber & Metal
Facades & External Wall Insulation
Roof Gardens

FORUM: MODERN METHODS OF CONSTRUCTION

SPECIAL REPORT - AFFORDABLE HOUSING

MAY 2008

DOORS & WINDOWS

Doors, Windows & Blinds
Architectural Ironmongery
Glass & Glazing
Access Control - DDA
Security & Fire Protection
Acoustics & Sound Insulation

FORUM: REFURBISHMENT & RESTORATION

SPECIAL REPORT - TRANSFORMING TELFORD
AN OVERVIEW OF TELFORD COUNTY COUNCILS FUTURE PLANS FOR HOUSING IN THEIR BOROUGH

JUNE 2008

FLOOR & WALL FINISHES

Wood Flooring
Day & Electrical Lighting
Kitchens & Bathrooms
Showers, Spa's & Jacuzzi's
Eco Labelled white goods

FORUM: INTEGRATED ELECTRONIC SOLUTIONS

SPECIAL REPORT - HIGH DENSITY HOUSING

JULY/AUGUST 2008

BRICKS & BLOCKS

Bricks, Blocks & Lintels
Ground & Concrete Work
Tanking & Waterproofing
Beam & Block Flooring
Stone & Masonry Products
Renders, Mortars & Plasters
Landscape & External Works

FORUM: DISABILITY DISCRIMINATION ACT

SPECIAL REPORT - HEALTH SAFETY

SEPTEMBER 2008

BUILDING SERVICES

Heating, Ventilation & Cooling
Community Heating
Underfloor Heating
Hot Water Supply Systems
Lifts, Stairs & Access

FORUM: ENERGY EFFICIENCY & RENEWABLES

SPECIAL REPORT - INTERIOR FINISHINGS & FIT-OUTS

OCTOBER 2008

DRAINAGE & PLUMBING

Above and Below Ground Drainage
Rainwater Collection Systems
Flood Protection
Water Treatment & Sewage Control
Waste Management & Recycling

FORUM: ADOPTION OF SUSTAINABLE DRAINAGE SYSTEMS

SPECIAL REPORT - EXHIBITION PREVIEW INTERBUILD

NOVEMBER 2008

ROOFING

Roofing, Cladding & Insulation
Roof Tiles, Slates and Thatch
Roof Ventilation & Accessories
Roof Lights and Windows
Roof Structures - Timber & Metal
Facades & External Wall Insulation
Roof Gardens

FORUM: DECENT HOMES STANDARD

SPECIAL REPORT - SECURITY & FIRE PROTECTION



hotelsport&leisure BUILDINGS & INTERIORS

The Hotel, Sport & Leisure sector, by its very nature, attracts a fantastic wealth of creative talent. The environment where this talent performs, needs to reflect the character and vibrancy of the people involved. Consumers too are becoming evermore selective in how they spend their leisure time and in such a competitive environment specifiers, buyers, planners and owners need access to a broad range of ideas and product information.

Hotel, Sport & Leisure and its website www.hotelsportandleisure.com have been developed in response to a demand from specifiers involved in Hotel, Sport & Leisure projects, for a magazine and web portal that publishes product and project information specifically tailored to their industry.

Our editor Joe Simpson is well respected in the industry and his depth of knowledge means he is ideally placed to comment on the latest developments across this expanding and lucrative market. His articles reflect the innovative and creative ideas that Architects & Designers are bringing to the table to attract and retain the audience that they and their clients are targeting.

Hotel, Sport & Leisure provides the perfect platform from which to promote your products and services. Printed on high quality paper, your advertisements, articles and press releases are reproduced to the highest standard mirroring the professional environment that you operate in.



FEATURE LED FRONT COVER



INFORMATIVE PRODUCT NEWS



TOPICAL NEWS CONTENT



IN DEPTH INDEPENDENT FEATURE ARTICLES

CIRCULATION

Hotel, Sport & Leisure's circulation is 100% controlled and ABC audited. It is made up of three core elements; requested readers, previous enquirers and most importantly, through our association with emap Glenigan, every named specifier currently working on a new build or refurbishment project that requires planning permission. This includes all hotels adding leisure facilities to their premises.

Architects and Interior Designers including Technicians and Technologists	5048
Project Managers, Facilities Managers, Directors and owners of Hotel, Sport & Leisure Facilities	3983
Owners & Managers of private and publicly owned Health and Fitness clubs	1667
Average Net Circulation	10,698

TESTIMONIAL

"I have used Tanner Stiles Publishing for one year and have been pleased with the professional way they have dealt with Island Stone and the quality of leads that Hotel, Sport & Leisure generates for us."

Margot Neuhaus - Island Stone Natural Advantage Ltd

REGULAR CATEGORIES

Editors Choice
New Developments
Doors, Window and Entrance Systems
Floors and Floor Coverings
Bathrooms, Washrooms and Changing Facilities
Lighting and Electrics
Interior Furniture and Furnishings
Hotel Reception and Front Desk
Walls and Wall Finishes
Building Services
Kitchens & Caterings
Sports & Gym
Stadia
Technology
Plus Regular Project articles and Case Studies written by Joe Simpson

FOCUS FEATURES

Winter (Jan/Feb) Interiors Furniture & Furnishings Doors & Windows Kitchens & Catering Floors & Floor Coverings Moveable Walls, Ceilings & Partitions	Summer (July/Aug) Building Services Heating & Ventilation & Air Conditioning Blinds, Louvres, Shutters & Screens Lighting & Electrics Security & Fire Protection Lifts, Stairs & Balustrades Access for the Disabled
Spring (April/May) External Envelope External Roof & Wall Finishes Structures and Stadia Perimeter and Sports Fencing CCTV/Intruder alarms Landscaping & External Works	Autumn (Oct/Nov) Sport & Leisure Swimming Pools & Spa's Sauna & Solarium Wash & Changing Room Facilities Showers Cubicles Sports & Gym Equipment





SPECIFICATION

PRODUCT UPDATE

Specification Product Update's unique style is designed to offer the reader a concise and easy to read advertorial format. Categorized into a range of sections that cover all aspects of the building process, each category features manufacturers products laid out in a preferred standard advertorial format which includes a good quality photograph, company name and address, together with up to 80 words of related text.

Every advertisement carries an enquiry number which our readers can use to source information about products via the post, fax or our 24/7 online enquiry service, that is designed to speed up the process of forwarding potential sales enquiries to you. Our online PRA (Project Response Analysis) service takes the reader enquiry service to a new level allowing you to view the potential projects that your enquirers are working on.

Alongside the printed publication we offer a comprehensive online service. This ensures that each issue is seen by the widest possible audience, with both web site and digital versions available. Accessed via specificationproductupdate.com the website provides a comprehensive product listing and archive search facility. The digital version of Specification Product Update is highly readable, allowing specifiers to view each issue on screen in a turn-page format. This means that instead of a static image you can enhance your entry with both video or flash animation.



PRODUCT LED FRONT COVER



Polypipe Building Products
 Broomhouse Lane, Edlington, Doncaster, DN12 1ES
 Tel: 01709 770000 Fax: 01709 770001
 Email: bpmarketing@polypipe.com Website: www.polypipe.com/bp

Polyplumb Underfloor Central Heating System
 Polypipes Polyplumb system is providing a modern central heating solution for a new housing development in a traditional setting. Pentland homes chose Polyplumb for its cottage style development, in the picturesque village of Leeds, Kent for its ease of installation, versatility and efficiency in use. The system can be laid on solid concrete or suspended and floating floors. Ultra flexible polypropylene pipe is simply walked into grooves on preformed plastic floorpanels, a screw is then applied to complete the floor surface.

ENQUIRY 74



INFORMATIVE PRODUCT NEWS

IN DEPTH PRODUCT PAGES



UP TO THE MINUTE WEB CONTENT

CIRCULATION

Specification Product Update's circulation is constructed from three distinctive aspects of the Tanner Stiles Publishing (TSP) database. Published quarterly, the magazine's circulation consists of the following:

- Individually Requested readers from Specification Product Update's sister title, Specification Magazine.
- All enquirers with a specifying influence that have enquired through other building related magazines and online directories within the TSP group in a 12 month period.
- Architects & other key specifiers who are currently working on live new build and refurbishment projects (Source emap glenigan).

TESTIMONIAL

"Specification Product Update continues to buck the trend on enquiry fall off. We have used the publication for over ten years and it continues to consistently generate important sales leads for our company at what we consider to be an extremely cost effective rate."

David Harris - Hunter Douglas Projects

REGULAR CATEGORIES

Front Cover Spotlight	External Wall Finishes	Architectural Ironmongery
New Product Highlights	Drainage & Plumbing	Glass & Glazing
Bricks & Blocks	Heating, Ventilation & Air Conditioning	Blinds & Louvres
Piling & Foundations	Kitchens & Bathrooms	Paints & Stains
Structural & System Building	Changing Room Equipment	Flooring
External Works	Lifts & Stairs & Access	Ceillings & Partitions
Fencing & Security	Balconies & Balustrades	Lighting & Electrics
Roof Safety	Doors, Windows & Entrance Systems	Acoustics & Sound Insulation
Roof Lights & Glazing	Security & Fire Protection	Furniture & Equipment
Roofing Cladding & Insulation		Interiors
Curtain Walling		





Project Management *for Building*

PRODUCT
UPDATE CARDS

Project Management for Building (PMFB) response cards is one of the leading product information packs in the Architectural and Building sector. Printed on top quality board to reproduce your company's message in a highly professional format, the targeted circulation identifies key specifiers who play a major role in building projects with a value in excess of £500,000. These key specifiers include Architects, Contractors, Project Managers and in many cases, the clients themselves.

Project Management for Building cards consistently generate top quality enquiries for our advertisers and our unique Project Response Analysis service enables advertisers to view enquiries online and see which projects that they are involved with.

Typical Example of the type of Project we target and the named specifiers that would receive our product card pack.

Project:	Council Buildings - Beverley - value £68m
Client:	East Riding of Yorkshire Council
Contact:	Mike Cooper - Assistant Principal Architect
Architects:	East Riding of Yorkshire Council
Contacts:	Mr David Richards Mr Fergus Aitkin Ms Anne Chamberlain

Main Contractor:	Kier (Northern) Ltd
Contact:	Mr David Poole

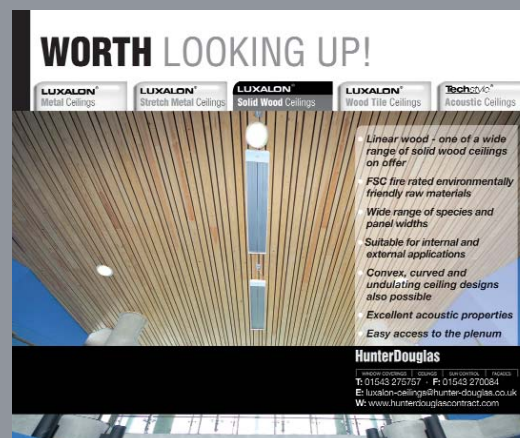
Quantity Surveyor:	Hall Construction
Contact:	Mr Neil Symonds



FRONT CARD



TYPICAL PRODUCT CARD



TYPICAL PRODUCT CARD

CIRCULATION

Project Management for Building cards are sent to every named specifier who, as part of the management team, are involved in the specification process on live current projects. A key advantage with Project Management for Building cards is that the circulation is updated for each published issue, effectively providing the advertiser with a new circulation each time their advertisement appears.

An analysis of our circulation from a recent card pack, produced the following breakdown by job title.

Architects (Including Technicians & Technologists)	5670
Building Contractors, Housebuilders & Developers	3190
Directors and Clients	2950
Project Managers	1150
Quantity Surveyors	1040
Building Surveyors	890
M&E Consultants	750
Total	15650

Project Management For Building Cards are published bi-monthly.

January
March
May
July
September
November

Advertisement Rates	1 ins	3ins	6ins
	£950.00	£875.00	£800.00

See Media Details for further information

TESTIMONIAL

"I use product cards purely for response, what I particularly like about Project Management for Building cards is the quality of the response that they generate. Their new online service is very useful for our sales team in that they can identify the projects the enquirer is working on before they make contact."

Harry Watson - SG Systems



Project Response Analysis is a new online enquiry service that provides our advertisers with unique information about the projects that enquirers to their products are working on. In conjunction with emap Glenigan we have developed a fast and easy to use online tool that gives you, the advertiser, access to key information about projects and the support teams involved with them. Each month we download the latest project information, identifying key named specifiers on each project to ensure that they, along with our requested readership, receive one or more of the following titles from our portfolio of construction related magazines.

- Specification Magazine
- Housing Specification
- Specification Product Update
- Hotel, Sport & Leisure
- Project Management for Building cards

When a reader makes an enquiry we feed that information back into our database and make a match across all the projects that they or their company are working on. We rank them on a value and date criteria and then, as shown below and on the opposite page, give you a comprehensive breakdown of the project in question ranked by highest value .

Full information about each of the other projects listed may also be viewed by purchasing viewer credits when booking your advertisement schedule or via a pay per view credit card payment system.

Commercial/Leisure Sector

Trevor Scale	Mountford Pigott Partnership	50 Kingston Road, New Malden, Kingston Upon Thames, KT3 3LZ	05/10/2007
We have 10 projects involving this contact on file			
Title	Value	Location	Update Date
Supermarket	£3.90m	Kenilworth	29/08/2007 Free
Hotel/2 Restaurants/Petrol Station	£3.30m	Ashford	22/08/2007 View
Retail (Refurbishment)	£1.40m	Dartford	27/04/2007 View
5 Cinema/Bingo/Casino/Restaurant Units	£10m	Ramsgate	24/01/2007 Paid
DIY Retail Store	£2.50m	Alton	08/03/2006 View
Retail Development	£7m	Wolverhampton	10/11/2004 View
Hotel	£7.49m	Ramsgate	01/11/2004 View
22 Flats & Retail Unit	£1.20m	Dartford	12/08/2004 View
Warehouse Refurbishment	£1.15m	Maldstone	02/08/2004 View
Retail Park	£1.20m	Aylesford	16/07/2004 View
We have 66 projects involving this company on file			
Title	Value	Location	Update Date
Retail/Offices/Hotel & Flats	£75m	Worcester	18/03/2003 View
456 Residential & Commercial Units	£29.6m	Barnstaple	06/02/2007 Free
15 Flats & 5 Retail/Office Units	£28m	Worcester	27/04/2007 View
Leisure Development	£25m	Weston-Super-Mare	19/09/2007 View
6 Cinema/Bingo/Casino/Restaurant Units	£10m	Ramsgate	24/01/2007 Paid
Commercial Development	£10m	Newport	17/01/2005 View
Self Storage & 13 Industrial Units	£9.70m	London	13/09/2004 View
Retail Development	£8.20m	Wolverhampton	26/05/2004 View
Hotel	£7.49m	Ramsgate	01/11/2004 View
4 Retail Warehouses	£7m	Alton	25/05/2007 View
Retail Development	£7m	Wolverhampton	10/11/2004 View
Non Food Retail/Garden Centre	£7m	Newport	01/09/2007 View
Mixed Development	£5.80m	London	24/10/2002 View
Non-food Retail	£5.30m	Stockport	16/12/2004 View
6 Non-food Retail Units (Alterations)	£5.10m	Aylesford	04/03/2004 View
DIY Retail Warehouse	£5m	Cwmbran	04/03/2005 View
Self Storage Warehouse & 32 Flats	£4.80m	London	24/11/2005 View
Warehouse	£4.60m	Bristol	03/05/2005 View
Supermarket & Petrol Filling Station	£4.60m	Cinderford	06/06/2006 View
Business Park	£4.40m	Chichester	14/02/2006 View

Housing/Residential Sector

Select date range of respondents to this campaign [HELP](#)

Full Subscription One Month One Week Yesterday Today

Show contact matching [HELP](#)

Tony Lloyd-Davies	Cornerstone Architects	79 Parliament Street, Ramsey, Isle of Man, IM8 1AQ	01/10/2007
We have 4 projects involving this contact on file			
Title	Value	Location	Update Date
16 Houses	£1.30m		20/09/2006 Paid
12 Luxury Houses	£2.20m	Port Erin	14/03/2006 Free
22 Houses	£2.20m		27/10/2005 Paid
14 Elderly Persons Apartments	£700k	Ramsey	10/11/2004 View
We have 28 projects involving this company on file			
Title	Value	Location	Update Date
177 Apartments	£10.6m	Douglas	23/03/2005 Free
25 Apartments/2 Shops/Office Units	£10m		25/08/2005 View
104 Flats & 11 Houses	£8.30m	Edgware	06/10/2007 Paid
111 Houses and Apartments	£6.80m	Ramsey	07/12/2004 View
46 Houses	£4.30m	Ramsey	07/12/2004 View
Flats	£4m	Douglas	28/10/2003 View
54 Apartments	£3.50m	Douglas	07/11/2005 View
54 Flats	£3.50m	Douglas	15/03/2006 View
12 Luxury Houses	£2.20m	Port Erin	14/03/2006 Free
22 Houses	£2.20m		27/10/2005 Paid
Hotel/Apartments (New/Conv)	£2.20m	Port St. Mary	09/07/2003 View
Residential Development	£1.80m	Douglas	31/10/2005 View
37 Houses and 6 Bungalows	£1.80m	Laxey	17/03/2004 View
18 Houses	£1.80m	Castletown	05/12/2005 View
School	£1.75m	Ramsey	27/06/2003 View
16 Houses	£1.60m	Port Erin	07/12/2005 View
16 Houses	£1.40m	Douglas	05/07/2007 View
25 Apartments	£1.40m	Workington	29/06/2005 View
16 Houses	£1.30m		20/09/2006 Paid
12 Houses	£1.20m	Douglas	09/05/2006 View

6 Cinema/Bingo/Casino/Restaurant Units

Site Address: Eurokent Business Park Haine Road, CT12 5AG
Start Date: Sep 4th, 2006
Contract Period: 10 Months

LATEST INFORMATION

We have been unable to establish the identity of the fitting out contractors. 26/03/2007 15:58:59

ADDITIONAL INFORMATION

This scheme is for the shell only. The units will be leased by View Cinema's, Rank Group, Frankie & Benny's, Chillies and Nando's. Each tenant will fit out their own unit.

TENDER INFORMATION

The following companies were unsuccessful bidders for this contract

Kier South-East
 Broadmead House New Hythe Business Park,
 Bellingham Way,
 Larkfield,
 Aylesford,
 ME20 6XS
 Tel: 01622 798700
 Fax: 01622 798825

CONTACT INFORMATION

Client: **Rosefarm Estates**
 11 West Pallant,
 Chichester,
 West Sussex,
 PO19 1TB
 Tel: 01243 785151
 Fax: 01243 785151
 Email: rosefarm@hnw.co.uk
 Contact: **Mr Barry Neill**, Development Manager

Architect: **Mountford Pigott Partnership**
 50 Kingston Road,
 New Malden,
 KT3 3LZ
 Tel: 020 8942 8942
 Fax: 020 8942 8944
 Email: admin@mountfordpigott.com
 Contact: **Mr Trevor Scale**, Associate Director

Quantity Surveyor: **Roger Wenn Partnership**
 72 St Dunstan's Street,
 Canterbury,
 Kent,
 CT2 8BL
 Tel: 01227 457471
 Fax: 01227 455904
 Email: mail@trwpl.com
 Contact: **Mr Shane Rowe**, Project Manager

Structural Consultant: **KMG Partnership**
 Fives Court 83 The Crescent,
 Abbots Langley,
 Hertfordshire,
 WD5 0DR
 Tel: 01923 260555
 Fax: 01923 260055
 Email: info@kmpg.com
 Contact: **Mr Kevin McGahan**, Managing Director

Mech & Elec Consultant: **KMG Partnership**
 Fives Court 83 The Crescent,
 Abbots Langley,
 Hertfordshire,
 WD5 0DR
 Tel: 01923 260555
 Fax: 01923 260055
 Email: info@kmpg.com
 Contact: **Mr Kevin McGahan**, Managing Director

Foundation Contractor: **Gallagher Contractors Ltd**
 Leirim House Coldharbour Lane,
 Little Preston,
 Aylesford,
 Kent,
 ME20 7NS
 Tel: 01622 716543
 Fax: 01622 882366
 Email: mail@gallaghercontractors.co.uk
 Contact: **Mr Nick Brandon**, Contracts Manager

Ramsgate, Kent
£10,000,000
 Project Value (Estimated)

Stage:

Planning Stage:
 Reserved matters granted
Contract Stage:
 Start on site

Information:

Development Type:
 New

Storeys:
 2

Units:
 6

Floor Area:
 3918 sq m.

Planning Authority:
 Thanet

Application Number:
 R/TH/04/0412

Application Date:
 21/12/2003

Construction:

Material Text:
 Construction - brick, coloured rendered, glazed curtain, glazed cladding, internal partitions, reconstituted stone cladding walls; carpets, insitu concrete, linoleum/vinyl floor; flat, glazed canopy, ppc aluminium cladding canopy, painted timber canopy, pitched metal, profiled metal standing seam cladding roof; double glazed windows; fire doors; air conditioned heating; pad foundations; lattice, painted steel column, portal frame; black top surfacing, fencing, lighting columns, planting, road drainage, road signage, street furniture, turfing/grass, white lining site works; access controls, bathroom, emergency lighting, fire alarm system, kitchen, suspended ceilings fittings.

Additional Info:

Create Date:
 17/04/1997

Previous Reported Date:
 24/01/2007

Project ID:
 97174388

164 Flats & 11 Houses

Site Address: Edgware Town FC Burnt Oak Broadway, HA8 5AQ
Start Date: Dec 2007
Contract Period: 21 months (approx.)

LATEST INFORMATION

Detailed plans resubmitted. 08/08/2006 16:34:50

ADDITIONAL INFORMATION

Start date is a guideline only.

CONTACT INFORMATION

Client: **Edgware Developments Ltd**
 Lyncroft Minorca Hill,
 Laxey,
 Isle of Man,
 IM4 7DN
 Tel: Not Available
 Fax: Not Available

Client: **London Borough of Harrow**
 Civic Centre Station Road,
 Harrow,
 HA1 2XF
 Tel: 020 8863 5611
 Fax: 020 8863 5611
 Email: info@harrow.gov.uk
 Contact: **Mr Roger Pidgeon**, Senior Planner

Architect: **Cornerstone Architects**
 79 Parliament Street,
 Ramsey,
 Isle of Man,
 IM8 1AQ
 Tel: 01624 810810
 Fax: 01624 810811
 Email: mail@cornerstonearchitects.co.uk
 Contact: **Mr Tony David**, Partner

Scheme Desc:

Scheme comprises construction of 164 flats and 11 houses in nine blocks of three and five storey buildings. Scheme includes infrastructure, sewer systems, enabling works, access roads and landscaping.

Planning Desc:

An application (ref: P/1532/06) for outline planning permission was granted by Harrow L.B.

Primary Category:

Flats & Hostels - Apartments, Flats

Other Categories:

Houses & Bungalows - Houses
 Roads - Estate Roads
 Roads - Enabling Works
 Gas/Air/Comms. - Landscaping Works
 Sewerage - Sewer Systems
 Roads - Infrastructure
 Electricity - Cable Laying

Edgware
£8,300,000
 Project Value (Estimated)

Stage:

Planning Stage:
 Detailed plans submitted
Contract Stage:
 Pre-Tender

Information:

Development Type:
 New

Storeys:
 5

Units:
 175

Planning Authority:
 Barnet

Application Number:
 WA0295A/06

Application Date:
 15/06/2006

Construction:

Material Text:
 Construction - block, brick, dry lining walls; carpets, insitu concrete, linoleum/vinyl, pre-cast concrete floor; pitched, timber truss roof; double glazed windows; fire, timber doors; passenger lifts; black top surfacing, drain covers, fencing, gravel, kerbing, manholes, planting, road drainage, road signage, Tarmac surfacing, top soil, turfing/grass, white lining site works; access controls, bathroom, emergency lighting, fire alarm system, fire escapes, kitchen, suspended ceilings fittings.

Additional Info:

Create Date:
 27/06/2006

Previous Reported Date:
 06/10/2007

Project ID:
 06235740

MECHANICAL DETAILS

Email material to: copy@tspltd.co.uk

Material must be supplied on Mac readable discs

PDF's should be print ready with all fonts and images embedded (min 300dpi)

Documents must be Quark Xpress

Images must be saved as TIFF or EPS

Minimum 300dpi at 100% size

Images other than EPS must be in picture boxes with an ITEM and White background

Ensure all images are CMYK not RGB

Ensure all colours are CMYK not RGB or SPOT including Freehand and Illustrator files

Inserts accepted by negotiation

Artwork requiring further production may levy further charges which will be pre-quoted prior to implementation

Cancellations in writing by the first working day of the month prior to the month of publication as our standard terms and conditions of sale state



Tanner Stiles
PUBLISHING LTD

Publication	Full page size	Half page size (Vertical)	Half page size (Horizontal)	Quarter page size
Specification Magazine	230mmW x 300mmH (Trim) 236mmW x 306mmH (Bleed)	90mmW x 260mmH	200mmW x 125mmH	90mmW x 125mmH
Housing Specification	230mmW x 300mmH (Trim) 236mmW x 306mmH (Bleed)	90mmW x 260mmH	200mmW x 125mmH	90mmW x 125mmH
Hotel Sport & Leisure	230mmW x 300mmH (Trim) 236mmW x 306mmH (Bleed)	93mmW x 260mmH	200mmW x 125mmH	93mmW x 125mmH
Project Management for Building Cards	117mmW x 140mmH (Trim) 123mmW x 146mmH (Bleed)	n/a	n/a	n/a

Publication		
Specification Product Update	100mmW x 130mmH	80 words of text with company contact details An accompanying high resolution colour photograph

Tanner Stiles Publishing Ltd
Grosvenor House
Central Park
Telford TF2 9TW

Tel: 01952 234000
Fax: 01952 234003
info@tspltd.co.uk

Add registration marks on for full page advertisements

Add a key line on for half page and quarter advertisements

www.tspltd.co.uk/media.php

ADVERTISEMENT RATES

Publication	DPS 1 Insert	DPS 4 Inserts	DPS 10 Inserts	Full Page 1 Insert	Full Page 4 Inserts	Full Page 10 Inserts	1/2 Page 1 Insert	1/2 Page 4 Inserts	1/2 Page 10 Inserts	1/4 Page 1 Insert	1/4 Page 4 Inserts	1/4 Page 10 Inserts	Literature & Web Panels	Classified Per SCC
Specification Magazine	£5000	£4500	£4000	£2600	£2250	£2000	£1300	£1150	£1000	£650	£575	£500	£150	£15.00
Housing Specification	£5000	£4500	£4500	£2200	£2000	£1800	£1100	£1000	£900	£550	£500	£450	£150	£15.00
Hotel Sport & Leisure	£4000	£3750	£3500	£2000	£1800	£1600	£1000	£900	£800	£500	£450	£400	£150	£15.00
Specification Product Update	n/a	n/a	n/a	£2000	£1800	£1600	n/a	n/a	n/a	£550	£500	£450	n/a	n/a

Response Cards	1 Insertion	3 Insertions	6 Insertions	Top 10 Position	Bottom Flip Card	Use of Publishers Reply Licence
Project Management For Building Cards	£1000	£900	£800	Add 10%	Add 10%	£ 75.00

Websites

	Rectangle Button advertisement (120 x 60 Pixels)	Square Button advertisement (120 x 120 Pixels)	Horizontal Banner advertisement (468 x 60 Pixels)	Vertical Banner advertisement (120 x 600 Pixels)
Rate per website	£100	£150	£400	£500

Tanner Stiles Publishing Ltd
Grosvenor House
Central Park
Telford TF2 9TW

Tel: 01952 234000
Fax: 01952 234003
info@tspltd.co.uk

Prices based on existing artwork supplied by the client. If a new banner or button is required this can be created and costs will be discussed before work is undertaken.

Advertisement rates are quoted in full colour

www.tspltd.co.uk/media.php

DIRECT MAIL WITH TSP DIRECT

PROVIDING YOUR SALES TEAM WITH DIRECT ACCESS TO POTENTIAL SALES FROM SPECIFIERS, BUYERS AND PROCUREMENT OFFICERS WHO ARE ACTUALLY INVOLVED ON ACTIVE LIVE PROJECTS.

TSP DIRECT

At Tanner Stiles Publishing we pride ourselves on the quality of the circulation data we manage for our range of magazines, product cards and e-media products. Circulation data is always going to be more up to date than traditional mailing lists, simply because we are updating information from our clients on a daily basis. We have a strict regime in place to ensure that permission is specifically sought before we can release our list data for third party usage.

We specialise in specific markets which are broken down into the following sectors.

Architecture & Building
Local Authority
Hotels
Sport and Leisure
Playground & Sport Activities
Landscaping
Amenity
Housing Associations
Registered Social Landlords
Housebuilders

For costings and a demographic breakdown of your requirements please contact our sales department for further information or visit www.tspltd.co.uk/direct_mail.php where a list of job titles can be accessed and a request form emailed to our circulation department for action.

Selection by Job Title/Function

- | | |
|---|---|
| <input type="checkbox"/> Architect | <input type="checkbox"/> Housing Association |
| <input type="checkbox"/> Building Contractor | <input type="checkbox"/> Housebuilder |
| <input type="checkbox"/> Building Surveyor | <input type="checkbox"/> Interior Designer |
| <input type="checkbox"/> Chairman | <input type="checkbox"/> Landscape Architect |
| <input type="checkbox"/> Chief Buyer | <input type="checkbox"/> Landscape Contractor |
| <input type="checkbox"/> Client | <input type="checkbox"/> Leisure Manager |
| <input type="checkbox"/> Construction Officer | <input type="checkbox"/> M&E Consultant |
| <input type="checkbox"/> Clerk of Works | <input type="checkbox"/> Materials Buyer |
| <input type="checkbox"/> Designer | <input type="checkbox"/> Owner |
| <input type="checkbox"/> Design Manager | <input type="checkbox"/> Project Manager |
| <input type="checkbox"/> Developer | <input type="checkbox"/> Planning Officer |
| <input type="checkbox"/> Director | <input type="checkbox"/> Property Services |
| <input type="checkbox"/> Electrical Engineer | <input type="checkbox"/> Premises Manager |
| <input type="checkbox"/> Estates Manager | <input type="checkbox"/> Purchasing |
| <input type="checkbox"/> Estimator | <input type="checkbox"/> Quantity Surveyor |
| <input type="checkbox"/> Facilities Manager | <input type="checkbox"/> Structural Engineer |
| <input type="checkbox"/> General Manager | <input type="checkbox"/> Surveyor |
| <input type="checkbox"/> Head of Procurement | <input type="checkbox"/> Technical Engineer |
| <input type="checkbox"/> Heating Engineer | |

LITERATURE **LIVE**

Designed to deliver a perfect digital representation of your print media, Literature Live is the ideal way to bring your brochures, mailings, magazines and leaflets to life! What's more Literature Live will help to take your PDFs beyond static media, by including web links, animation, audio and video into your pages.

In terms of navigation; zoom features, sticky notes, interactive contents pages and bookmarks make moving around your document easy. The removal of print and postage costs, as well as producing something which is environmentally friendly, only help to solidify the package.

To make the system as easy to use as possible there's no need for your readers to download any software and everything can be accessed through their web browser.

To demonstrate the full potential of the system we can create a free 12 page brochure for a one month trial with no obligation to buy.

For more information please visit <http://www.literaturelive.co.uk> or email mike@tspltd.co.uk.



GO ONLINE NOW @ www.literaturelive.co.uk to make your literature come to life

- 
-  Specification Magazine (www.specificationmagazine.com)
 -  Housing Specification (www.housingspecification.com)
 -  Hotel, Sport & Leisure Building & Interiors (www.hotelsportandleisure.com)
 -  Specification Product Update (www.specificationproductupdate.com)
 -  Project Management for Building (www.pm4b.co.uk)
 -  Building Specification (www.buildingspecification.com)